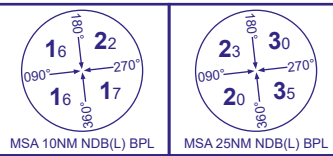


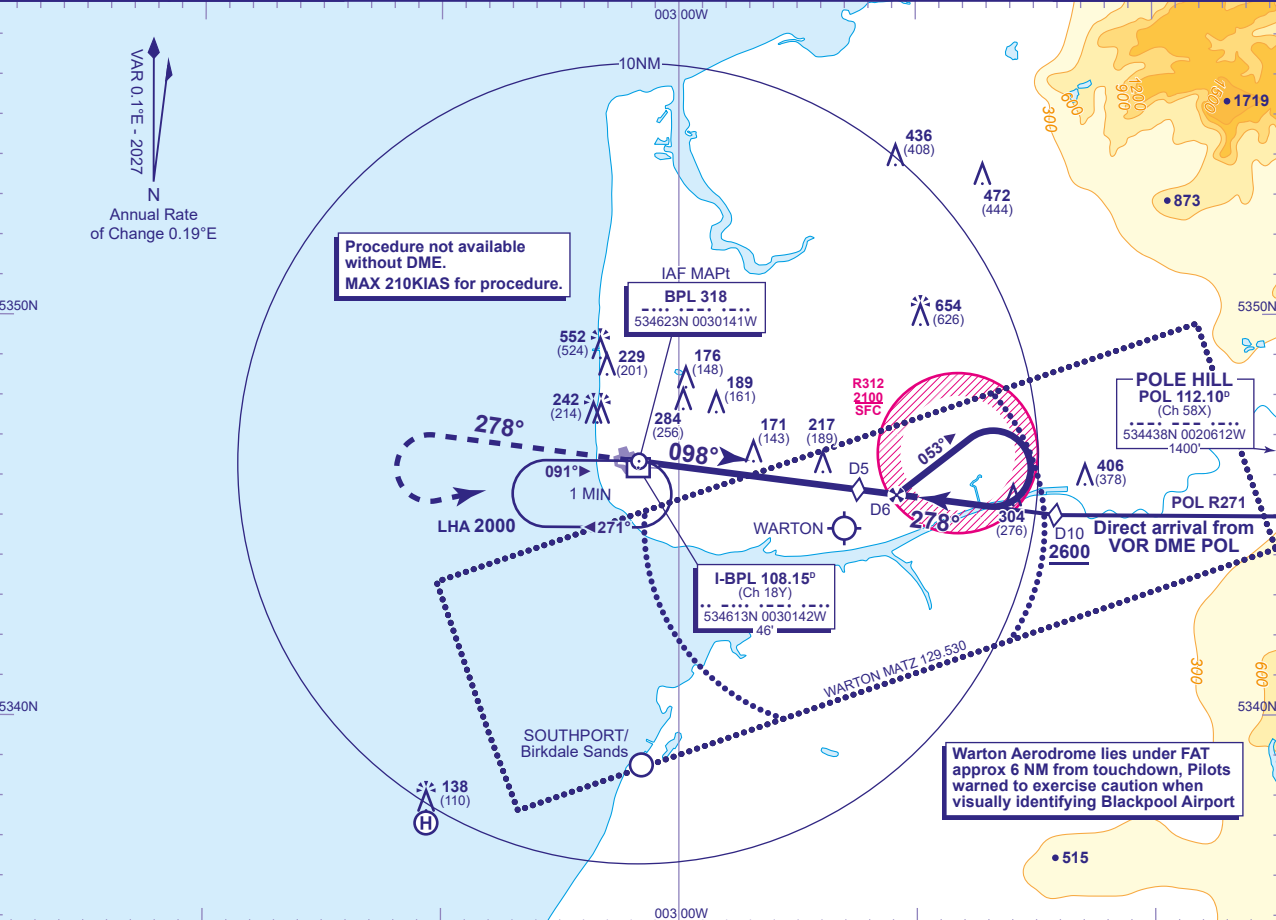
INSTRUMENT APPROACH CHART - ICAO

BLACKPOOL
NDB(L)/DME
RWY 28
(ACFT CAT A,B,C,D)



APP	119.955	BLACKPOOL APPROACH	AD ELEVATION	34
TWR	119.955	BLACKPOOL TOWER	THR ELEVATION	28
ATIS	127.205	BLACKPOOL INFORMATION	OBSTACLE ELEVATION	654 AMSL (626) (ABOVE THR)
			BEARINGS ARE MAGNETIC	

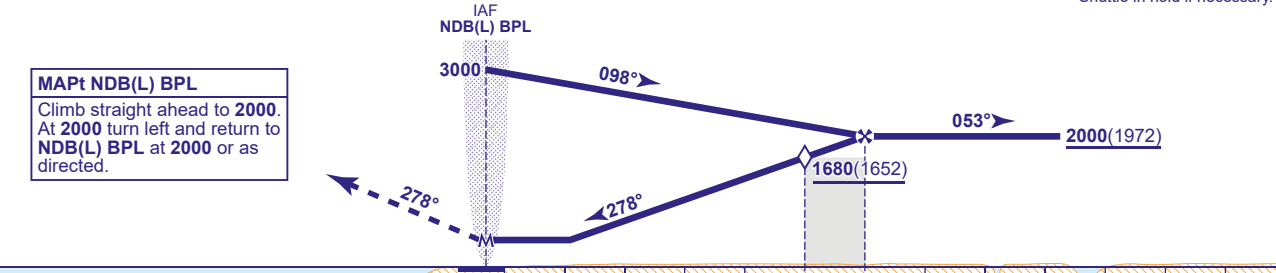
TRANSITION ALTITUDE	3000
---------------------	------



RECOMMENDED PROFILE Gradient 5.3%, 320FT/NM

DME I-BPL	5	4	3	2	1
ALT(HGT)	1680(1652)	1360(1332)	1040(1012)	720(692)	400(372)

Shuttle in hold if necessary.



I-BPL DME zero ranged to THR RWY 28

Aircraft Category	A	B	C	D	Rate of descent	G/S KT	160	140	120	100	80
OCA (OCH)	Procedure	470(442)	470(442)	470(442)		FT/MIN	850	750	640	530	430
VM(C)OCA (OCH AAL)	Total Area	590(556)	830(796)	930(896)	930(896)						
	South of RWY 10/28	N/A	N/A	N/A	N/A						

DIRECT ARRIVAL FROM VOR DME POL
(Subject to ATC approval). Depart VOR DME POL on R271 and descend **not below 3000**. Request direct approach from ATC and continue descend **not below 2600** to intercept extended FAT (QDM 278°) at I-BPL DME 10. When established continue **not below 2000(1972)** and continue as for main procedure.

- NOTE 1** During procedure turn, aircraft should not proceed beyond I-BPL DME 13.
2 FAT offset 3.3° south of RWY C/L.
3 Lowest altitude to commence procedure from holding or missed approach is **2000**.
4 Aircraft not permitted below **1670** over EGR312 for the purpose of landing at Blackpool.

CHANGE (4/26): MAG VAR. MAG TRACKS. 3NM SDF AND D5/D3 MOCA REMOVED. OCA(OCH). VM(C)OCA(OCH AAL) TOTAL AREA CAT A.